

2025年6月度 市場動向資料集

June 2025 Market Trends

日本ハム株式会社 NH Foods Ltd.
July 25, 2025

本資料のいかなる情報も、弊社株式の購入や売却等を勧誘するものではありません。
None of the information contained in these data are intended to try and influence readers to the purchasing or selling of stock in NH Foods Ltd.

Copyright © NH Foods Ltd. All Rights Reserved. (無断転載禁止)



たんぱく質を、もっと自由に。

Nipponham Group Vision 2030

牛肉市況 / Beef Market Trends	P.3-6
豚肉市況 / Pork Market Trends	P.7-9
鶏肉市況 / Chicken Market Trends	P.10-12
副原料相場価格 / Market Price for Auxiliary Materials	P.13
飼料相場 / Market Trends in Grain Feed Prices	P.14
家計調査 / Family Income and Expenditure Survey by Types of Meat	P.15
ハム・ソーセージ全国生産数量、輸入通関実績数量 /Production and Import Volume Based on Customs Clearances for Hams and Sausages	P.16-17
外食・量販店売上推移 / Sales Trends in restaurants and volume retailers	P.18
参照データ/References	P.19-28
お問い合わせ/ Contact	P.29

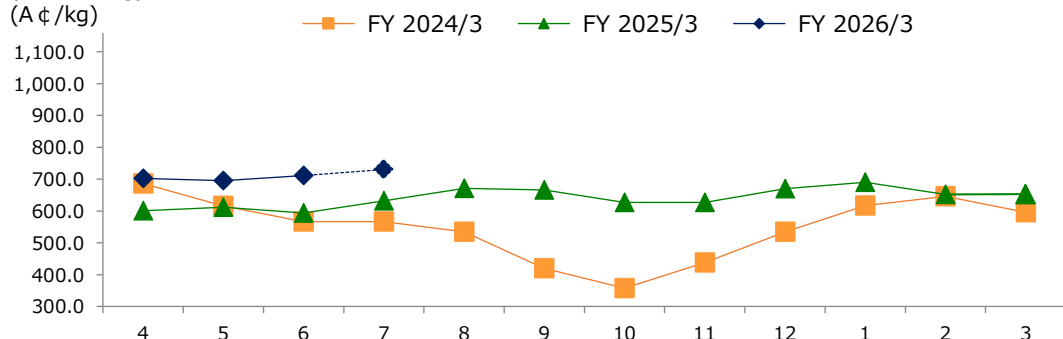
※各タイトルを[クリックすると当ページに移動](#)します

※各ページのグラフをクリックすると詳細な数字をご確認いただけるページに移動します

牛肉相場価格 / Beef Prices

【豪州産 若齢牛価格(生産者販売価格) (現地価格)】 Eastern Young Cattle Indicator (EYCI)

(豪セント/kg)



※破線は暫定値
The dashed line is provisional.

若齢牛価格：豪州東部3州の主要家畜市場の若齢牛の加重平均取引価格
EYCI: Weighted average price of young cattle in the major livestock market in the three eastern Australia states

(豪セント/kg)
(A ¢ /kg)

前期差
Year-on-year

117.8

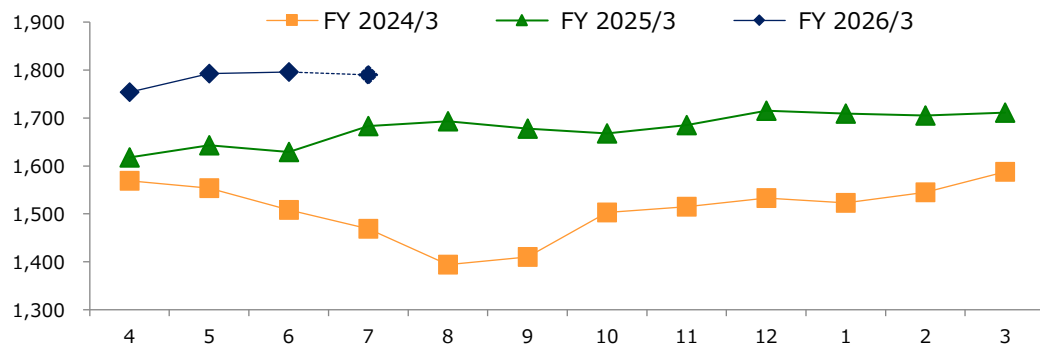
前月差
Month-on-month

16.0

グラフ資料出所：豪州食肉家畜生産者事業団
Source : MEAT & LIVESTOCK AUSTRALIA

【豪州産チルドビーフ ショートグレインフルセット価格 (日本国内価格)】 Australian Chilled Beef [Full Set (Short Grain Fed)] Prices

(¥/kg)



※破線は暫定値
The dashed line is provisional.

ショートグレイン：穀物肥育期間 100日以上
Short Grain Fed: Grain Fed period 100 days or more
フルセット：セット販売(基本12部位) ⇔ パーツ販売
Full Set: Set Price of primal 12 items ⇔ Single item Sales

(¥/kg)

前期差
Year-on-year

167.0

前月差
Month-on-month

3.0

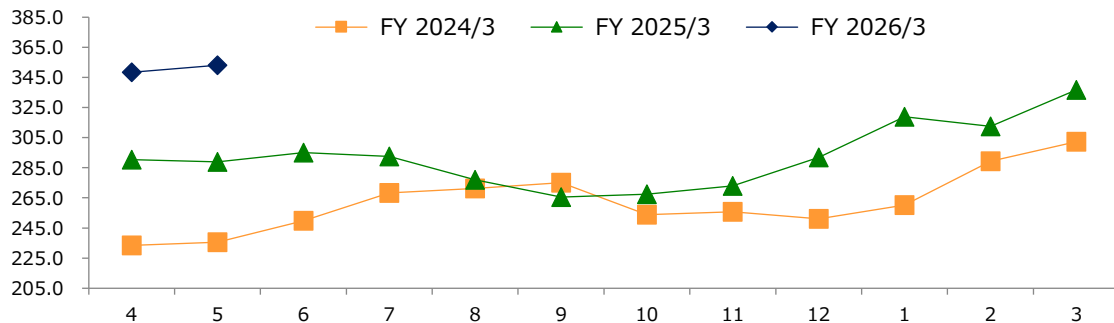
グラフ資料出所：食品産業新聞社畜産日報掲載分から単純平均単価(全て単純平均単価)
Source : "DAILY MEAT & LIVESTOCK" which is a trade business paper published in Japan (all graphs based on average prices)

牛肉相場価格 / Beef Prices

【米国産 肥育素牛(生産者販売価格) (現地価格)】

(US \$/cwt)

U.S. cattle prices, 600-650lb
(US \$/cwt)



前期差
Year-on-year

前月差
Month-on-month

64.2

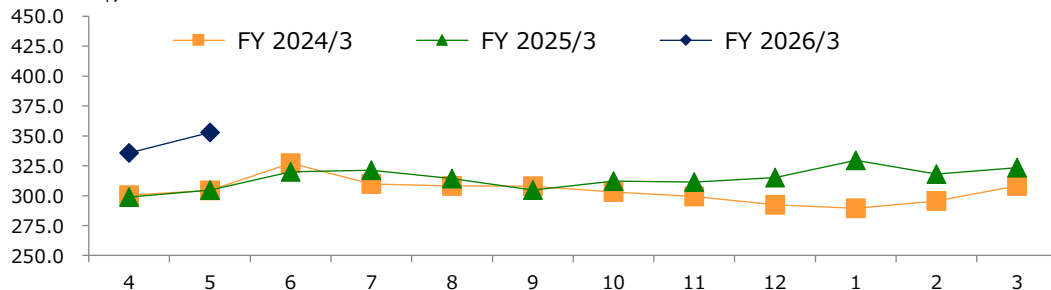
4.6

グラフ資料出所：農畜産業振興機構
Source : Agriculture & Livestock Industries Corporation

【米国産 牛肉カットアウトバリュー 枝肉ベース(現地価格)】

(ドル/100ポンド)
(US \$/cwt)

U.S. Beef Boxed cutout, Choice 1-3, 600-900 lbs
(ドル/100ポンド)
(US \$/cwt)



前期差
Year-on-year

前月差
Month-on-month

48.2

17.1

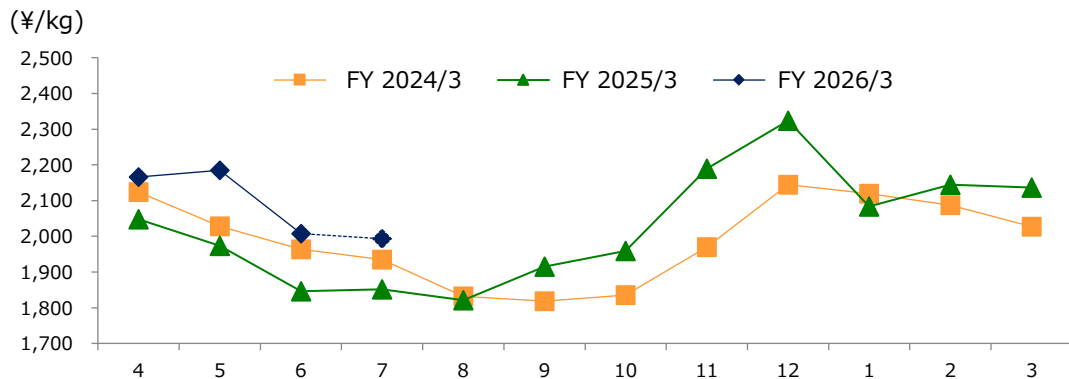
グラフ資料出所：農畜産業振興機構
Source : Agriculture & Livestock Industries Corporation

牛肉相場価格 / Beef Prices

【去勢和牛 A-3 (東京市場、税込、円/KG)】

Tokyo Market A-3 Wagyu Steer Prices, Tax included

※破線は暫定値
The dashed line is provisional.



A-3 : 格付けランク、歩留まり等級A~C / 肉質等級1~5
Yield Grade A-C / Meat Quality Grade 1-5

(¥/kg)

前期差

Year-on-year

前月差

Month-on-month

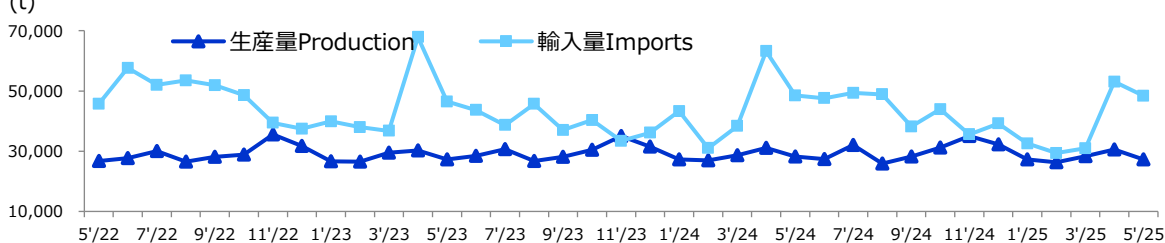
162.0

-177.0

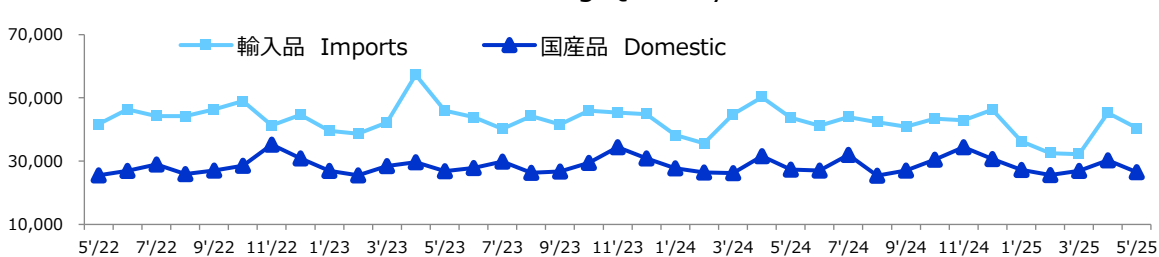
グラフ資料出所：東京食肉市場株式会社
Source : Tokyo Meat Market Co.Ltd

牛肉需給量推移 / Beef Supply and Demand Trends

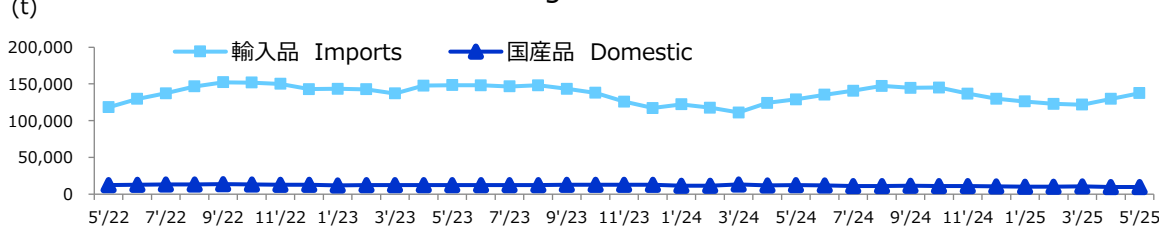
(t) 【生産量と輸入量】 Production and Imports



(t) 【推定出回り量】 Estimated Marketing Quantity



(t) 【推定期末在庫】 Estimated Ending Stock



グラフ資料出所：農畜産業振興機構

Source: Agriculture & Livestock Industries Corporation

注：数量は部分肉ベース。輸入量は煮沸肉並びにくず肉のうちほほ肉及び頭肉のみ含む。

Notes: 1. Boneless cuts equivalent

2. Figures for stocks are estimated by ALIC

	前期比 Rate of change	前月比 Rate of change
輸入量 Imports	100%	91%
生産量 Production	97%	89%
推定出回り量：推定期首在庫+生産量+輸入量-輸出量-推定期末在庫 Estimated marketing quantity: Estimated beginning stock + Production + Imports - Exports - Estimated ending stock		
	前期比 Rate of change	前月比 Rate of change
輸入品 Imports	93%	89%
国産品 Domestic	97%	88%
	前期比 Rate of change	前月比 Rate of change
輸入品 Imports	107%	106%
国産品 Domestic	81%	100%

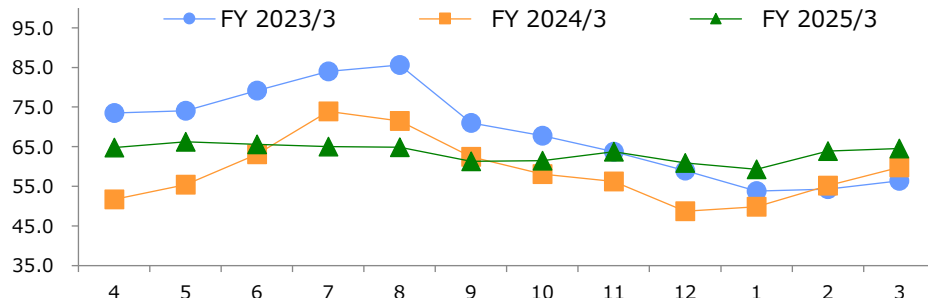
豚肉相場価格 / Pork Prices

【米国産 肥育豚価格(生産者販売価格) (現地価格)】

Live U.S. Fattening Pig Prices (Pig Sales Price)

(セント/ポンド)
(US ¢/lb)

(セント/ポンド)
(US ¢/lb)



前期差
Year-on-year

前月差
Month-on-month

4.7

0.6

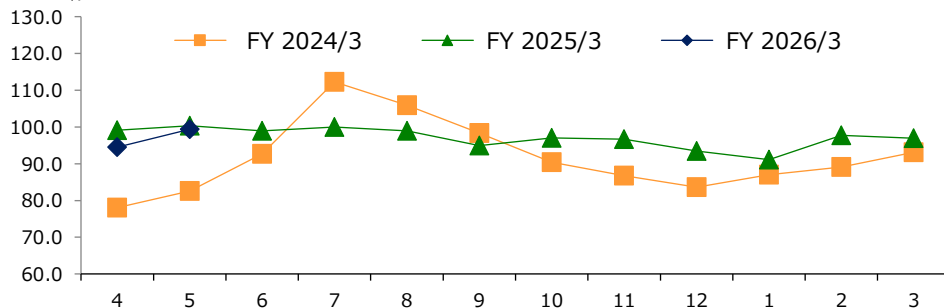
グラフ資料出所：農畜産業振興機構（全て単純平均単価）
 Source : Agriculture & Livestock Industries Corporation
 (all graphs based on average prices)

【米国産 豚肉カットアウトバリュー 枝肉ベース (現地価格)】

U.S. Pork Cutout composite carcass, 53-54% lean

(ドル/100ポンド)
(US \$/cwt)

(ドル/100ポンド)
(US \$/cwt)



前期差
Year-on-year

前月差
Month-on-month

-0.9

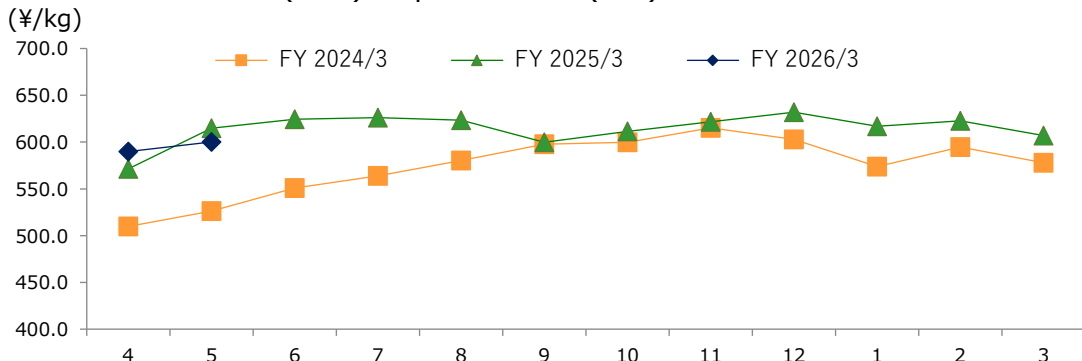
4.9

グラフ資料出所：農畜産業振興機構
 Source : Agriculture & Livestock Industries Corporation

豚肉相場価格 / Pork Prices

【シーズンドボーク(GSP)輸入価格]

Seasoned Pork (GSP) Import Prices (CIF)



シーズンドボーク (豚肉調整品):主にソーセージ等の加工原料用
Mainly used for sausages

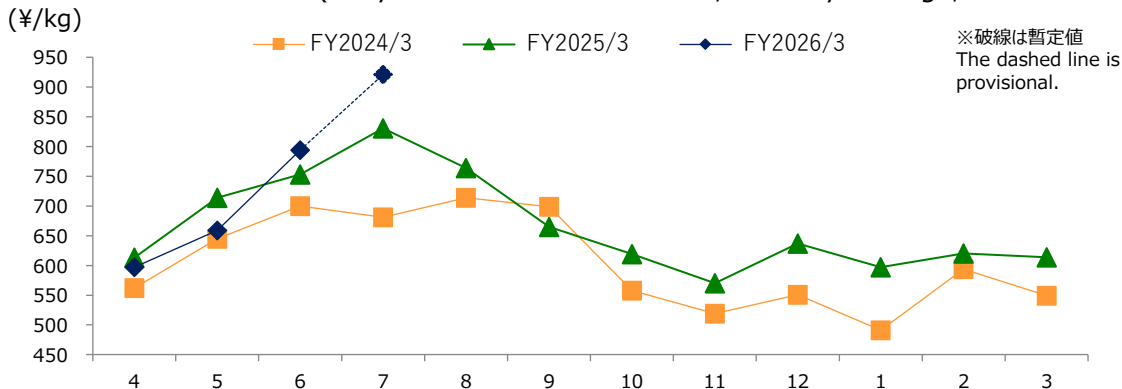
(¥/kg)

前期差 Year-on-year	前月差 Month-on-month
-14.6	10.1

グラフ資料出所：財務省貿易統計（金額÷数量で算出）
 Source: Trade Statistics of Japan
 (Calculated by amount/quantity)

【豚肉枝肉卸売価格 上物 東京食肉市場平均価格 税込】

Pork Carcass Prices (Tokyo Market Excellent Grade, monthly average, Tax Included)



上物：等級(極上、上、中、並、等外)

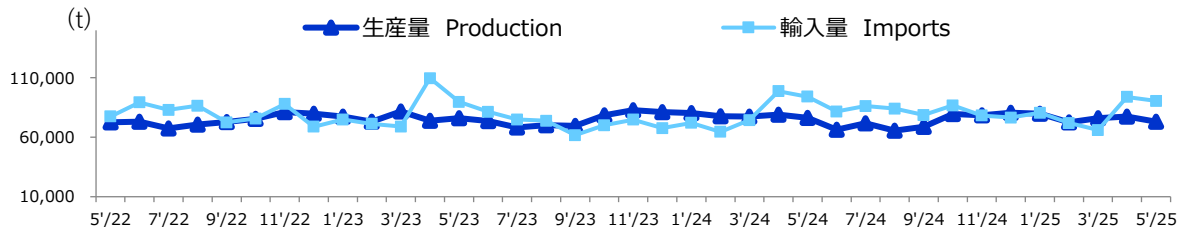
(¥/kg)

前期差 Year-on-year	前月差 Month-on-month
41.0	135.0

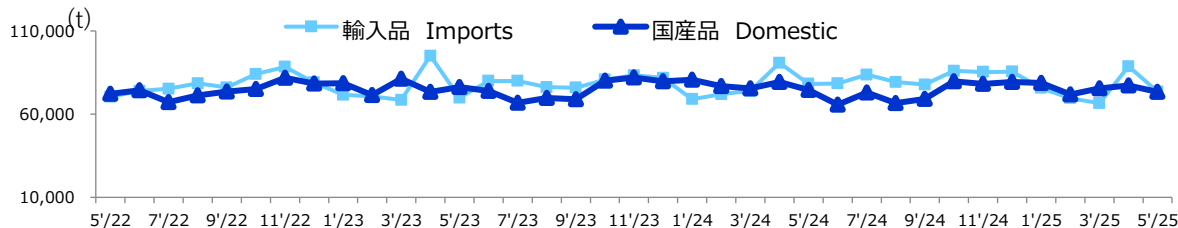
グラフ資料出所：東京食肉市場株式会社
 Source: Tokyo Meat Market Co. Ltd

豚肉需給量推移 / Pork Supply and Demand Trends

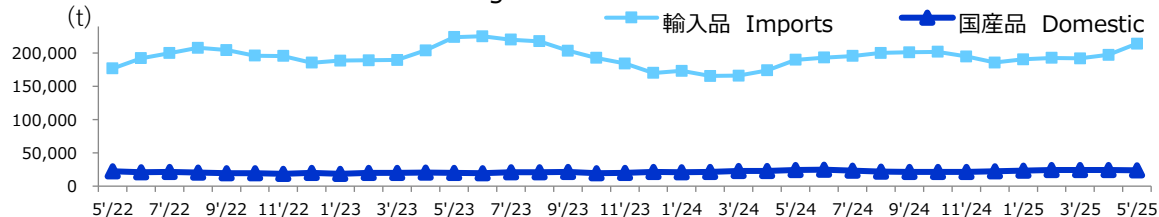
【生産量と輸入量】 Production and Imports



【推定出回り量】 Estimated Marketing Quantity



【推定期末在庫】 Estimated Ending Stock



グラフ資料出所：農畜産業振興機構

Source: Agriculture & Livestock Industries Corporation

注：数量は部分肉ベース。輸入量は煮沸肉並びにくず肉のうちほほ肉及び頭肉のみ含む。

Notes: 1. Boneless cuts equivalent

2. Figures for stocks are estimated by ALIC

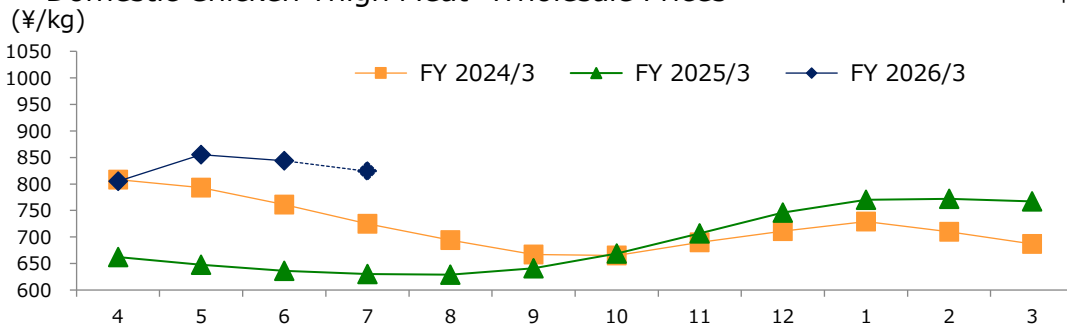
	前期比 Rate of change	前月比 Rate of change
輸入量 Imports	96%	96%
生産量 Production	96%	94%
推定出回り量：推定期首在庫+生産量+輸入量-輸出量-推定期末在庫 Estimated marketing quantity: Estimated beginning stock stock +Production+Imports-Exports-Estimated ending stock		
	前期比 Rate of change	前月比 Rate of change
輸入品 Imports	94%	83%
国産品 Domestic	99%	95%
	前期比 Rate of change	前月比 Rate of change
輸入品 Imports	113%	109%
国産品 Domestic	99%	98%

鶏肉相場価格 / Chicken Prices

【国産鶏肉卸売価格（もも肉、税抜）】

Domestic Chicken Thigh Meat Wholesale Prices

※破線は暫定値
The dashed line is provisional.



(¥/kg)

前期差
Year-on-year

前月差
Month-on-month

208.0

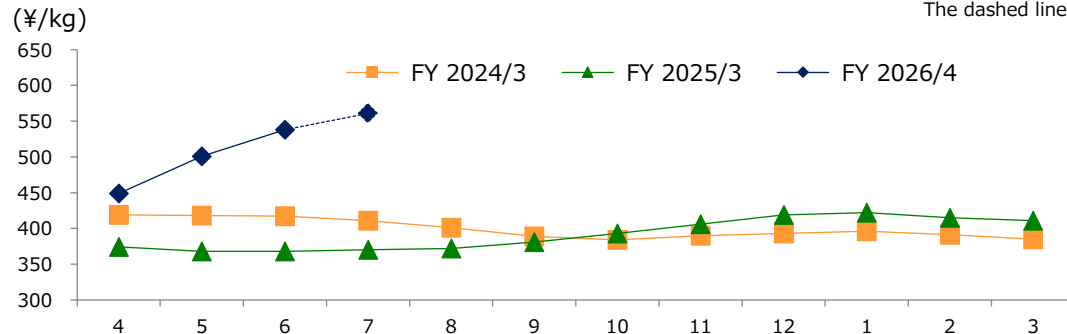
-11.0

グラフ資料出所：農畜産業振興機構、農林水産省「食鳥市況情報」
Source: Agriculture & Livestock Industries Corporation, MAFF "Survey of Broiler Wholesale price"

【国産鶏肉卸売価格（むね肉、税抜）】

Domestic Chicken Breast Meat Wholesale Prices

※破線は暫定値
The dashed line is provisional.



(¥/kg)

前期差
Year-on-year

前月差
Month-on-month

170.0

37.0

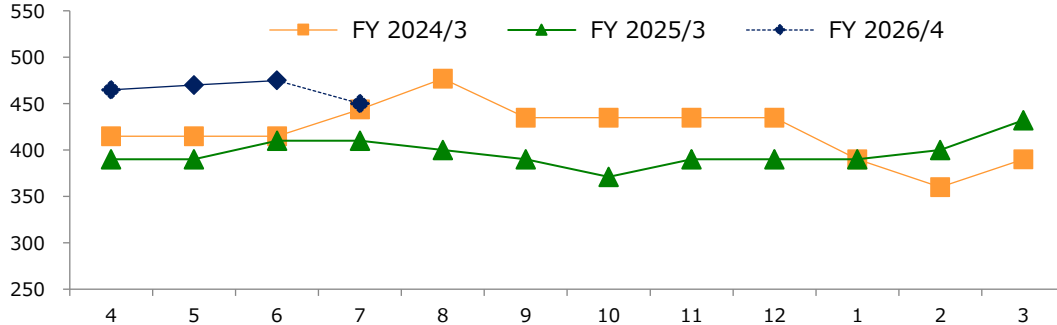
グラフ資料出所：農畜産業振興機構、農林水産省「食鳥市況情報」
Source: Agriculture & Livestock Industries Corporation, MAFF "Survey of Broiler Wholesale price"

★冬場の需要が高く、相場も高くなる傾向。また、鳥インフルエンザ（主に冬場）が流行すると相場も上昇する。

鶏肉相場価格 / Chicken Prices

【ブラジル産もも肉価格】
 Brazilian Chicken Thigh Prices
 (¥/kg)

※破線は暫定値
 The dashed line is provisional.

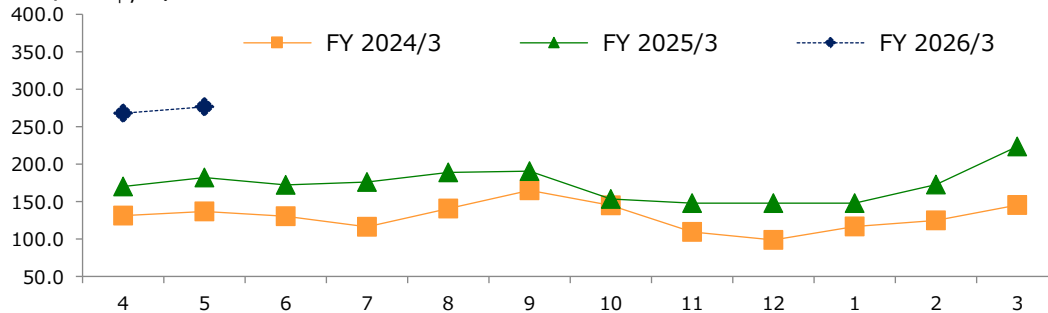


(¥/kg)

前期差 Year-on-year	前月差 Month-on-month
65.0	5.0

グラフ資料出所：食品産業新聞社畜産日報掲載分から単純平均単価
 (全て単純平均単価)
 Source: "DAILY MEAT & LIVESTOCK" which is a trade
 business paper published in Japan (all graphs based on
 average prices)

【米国産むね肉価格 (ボンレス)(現地価格)】
 U.S. Chicken, Boneless Breast Prices
 (セント/ポンド)
 (US ¢/lb)



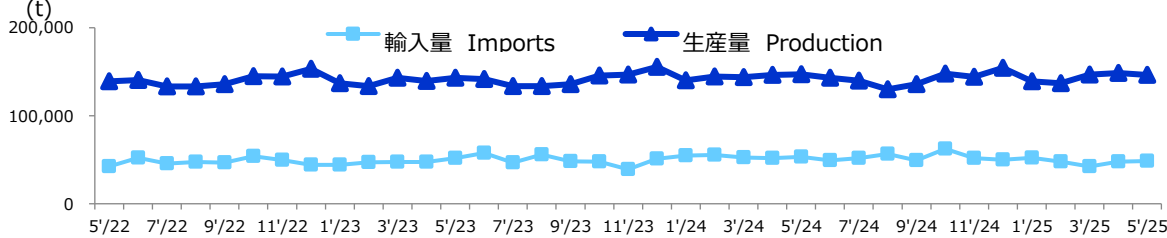
(セント/ポンド)
(US ¢/lb)

前期差 Year-on-year	前月差 Month-on-month
94.5	8.5

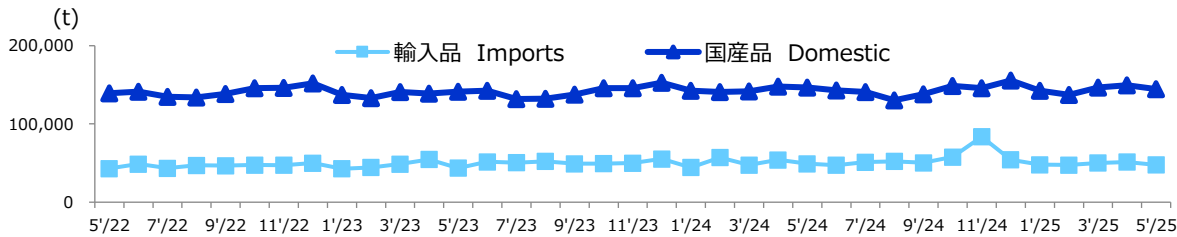
グラフ資料出所：農畜産業振興機構
 Source: Agriculture & Livestock Industries Corporation

鶏肉需給量推移 / Chicken Supply and Demand Trends

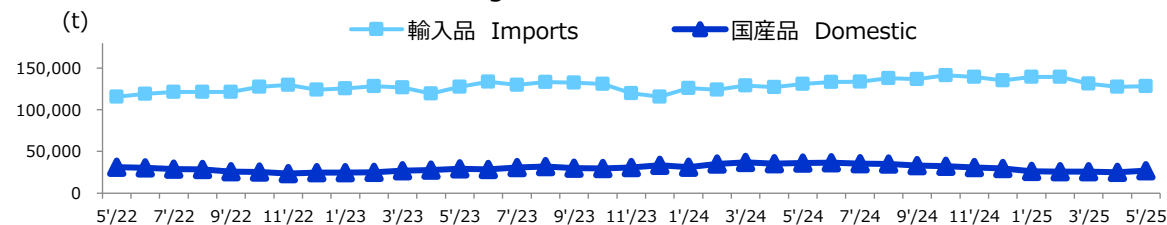
【生産量と輸入量】 Production and Imports



【推定出回り量】 Estimated Marketing Quantity



【推定期末在庫】 Estimated Ending Stock



グラフ資料出所：農畜産業振興機構
Source: Agriculture & Livestock Industries Corporation

注：数量は部分肉ベース。輸入量は煮沸肉並びにくす肉のうちほほ肉及び頭肉のみ含む。

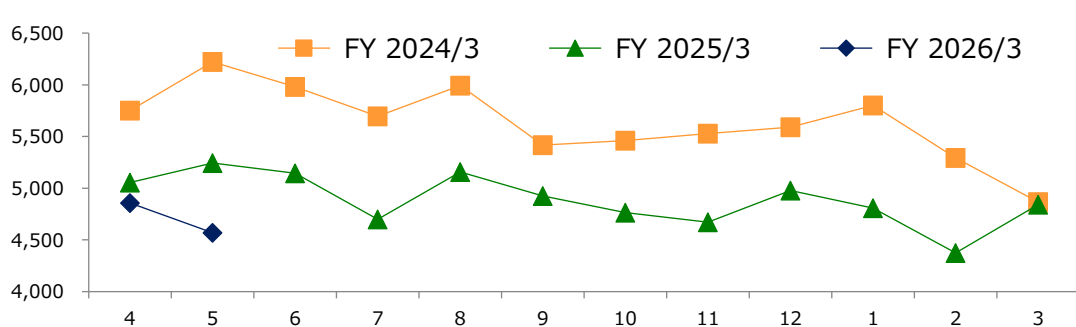
Notes: 1. Boneless cuts equivalent
2. Figures for stocks are estimated by ALIC

	前期比 Rate of change	前月比 Rate of change
輸入量 Imports	91%	102%
生産量 Production	99%	99%
推定出回り量：推定期首在庫+生産量+輸入量-輸出量-推定期末在庫 Estimated marketing quantity: Estimated beginning stock + Production + Imports - Exports - Estimated ending stock		
	前期比 Rate of change	前月比 Rate of change
輸入品 Imports	97%	93%
国産品 Domestic	99%	97%
	前期比 Rate of change	前月比 Rate of change
輸入品 Imports	98%	101%
国産品 Domestic	74%	108%

副原料相場価格 / Market Price for Auxiliary Materials

【天然腸輸入価格】※主に羊腸(豚腸・牛腸等も含む)

Natural Casing Import Price (CIF) Mainly seep casing including pork & beef casing
(¥/kg)



(¥/kg)

前期差
Year-on-year

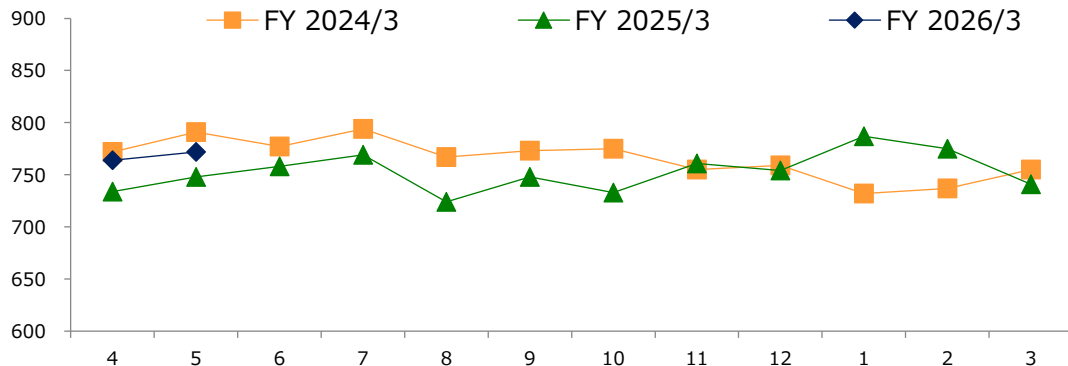
前月差
Month-on-month

-676

-288

グラフ資料出所：財務省貿易統計（金額÷数量で算出）
Source: Trade Statistics of Japan (Calculated by amount/quantity)

【ナチュラルチーズ輸入価格】 Natural cheese(CIF)
(¥/kg)



(¥/kg)

前期差
Year-on-year

前月差
Month-on-month

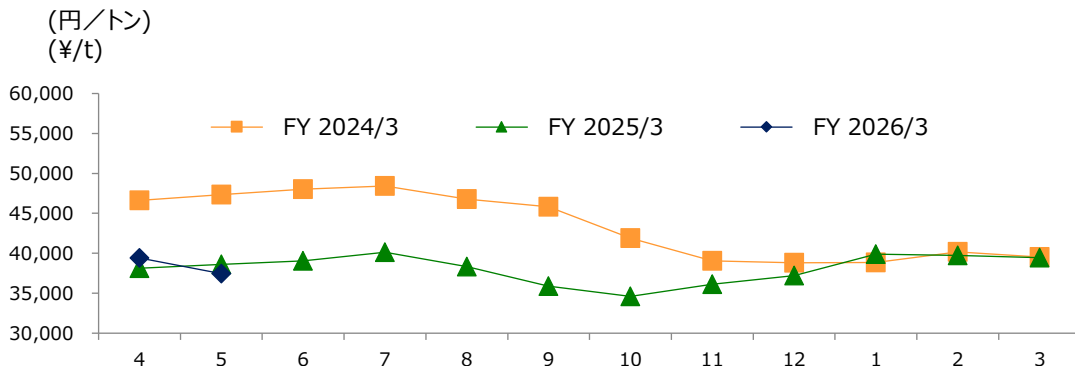
24

8

グラフ資料出所：農畜産業振興機構（全て単純平均単価）
Source: Agriculture & Livestock Industries Corporation
(all graphs based on average prices)

飼料相場 / Market Trends in Grain Feed Prices

【とうもろこしの輸入価格】 Imported Corn Prices



(円/トン)
(¥/t)

前期差
Year-on-year

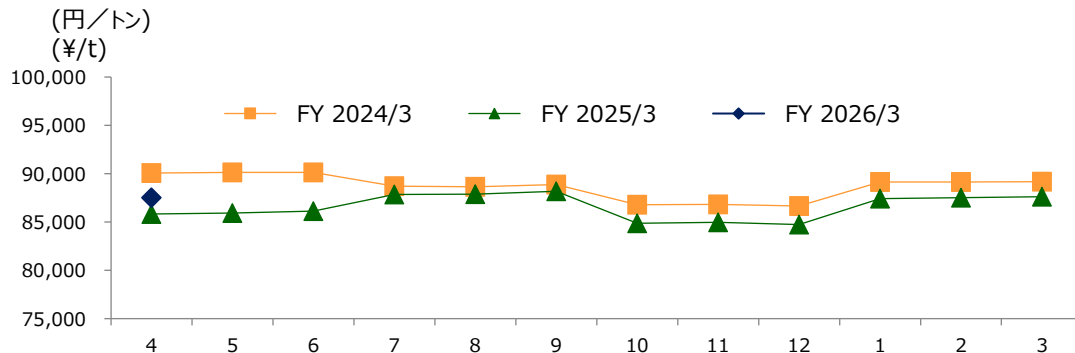
前月差
Month-on-month

-1,153

-1,969

グラフ資料出所：農畜産業振興機構（全て単純平均単価）
Source: Agriculture & Livestock Industries Corporation
(all graphs based on average prices)

【配合飼料の価格】 Mixed Feed Prices



(円/トン)
(¥/t)

前期差
Year-on-year

前月差
Month-on-month

1,690

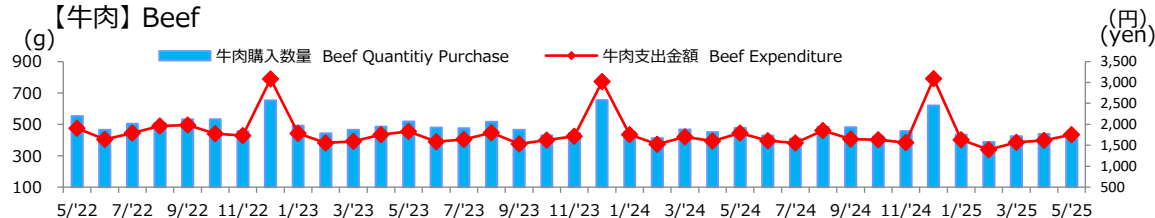
-114

グラフ資料出所：農畜産業振興機構（全て単純平均単価）
Source: Agriculture & Livestock Industries Corporation
(all graphs based on average prices)

★配合飼料の半分はトウモロコシ価格が占める。
3月、6月、9月、12月に今後3か月分の配合飼料価格が全農より発表される。

家計調査/ Family Income and Expenditure Survey by Types of Meat

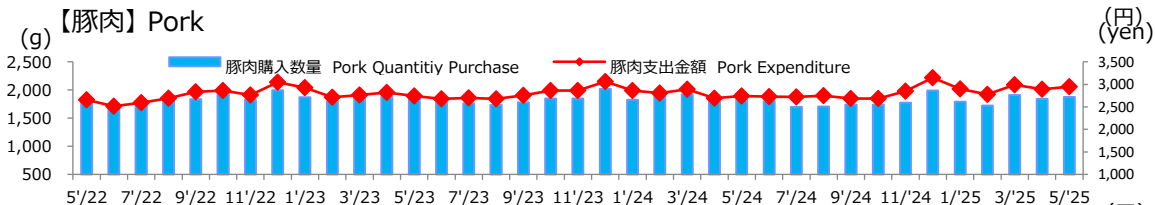
【牛肉】 Beef



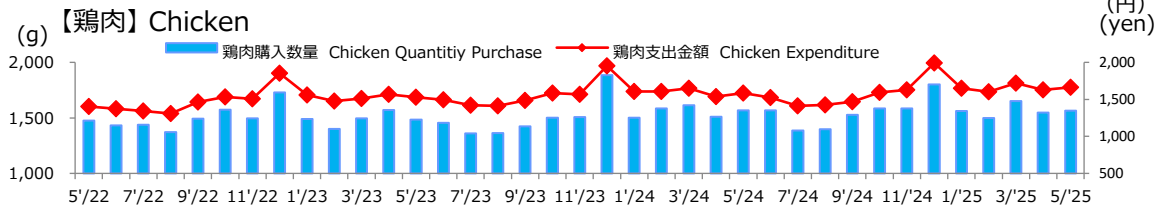
グラフ資料出所：総務省「家計調査」
Source: Ministry of Internal Affairs and Communications "Family Income and Expenditure Survey"
二人以上の世帯（農林漁家世帯を除く）
Two-or-more-person Households (Not including agricultural, forestry and fisheries households)

	前期差 Year-on-year	前月差 Month-on-month
購入数量(g) Quantity Purchase(g)	-32	6
支出金額(円) Expenditure (yen)	-40	137
購入数量(g) Quantity Purchase(g)	42	34
支出金額(円) Expenditure (yen)	205	56
購入数量(g) Quantity Purchase(g)	-5	15
支出金額(円) Expenditure (yen)	79	34
購入数量(g) Quantity Purchase(g)	-37	4
支出金額(円) Expenditure (yen)	9	45

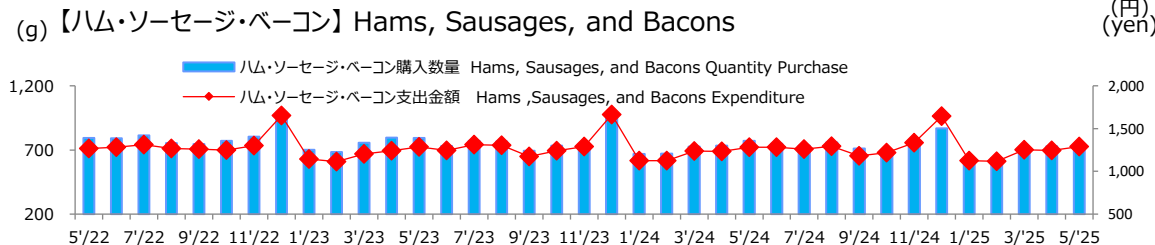
【豚肉】 Pork



【鶏肉】 Chicken



【ハム・ソーセージ・ベーコン】 Hams, Sausages, and Bacons



ハム・ソーセージ全国生産数量、輸入通関実績数量

/Production and Import Volume Based on Customs Clearances for Hams and Sausages



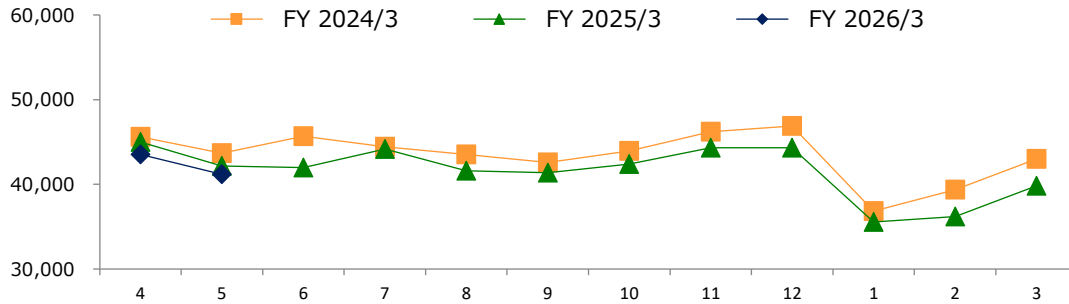
たんぱく質を、もっと自由に。

Nipponham Group Vision 2030

【ハム・ソーセージ全国生産数量】

Production and Import Volume Based on Customs Clearances for Hams and Sausages

(t)



(t)

前期差

Year-on-year

前月差

Month-on-month

-1,000

-2,357

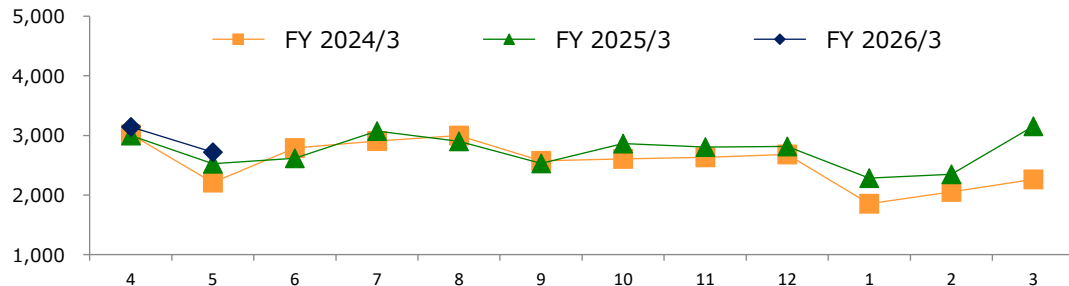
グラフ資料出所：日本食肉加工協会

Source: Japan Meat Processor Association

【ハム・ソーセージ輸入通関実績数量】

Import Volume Based on Customs Clearances for Hams and Sausages

(t)



(t)

前期差

Year-on-year

前月差

Month-on-month

194

-425

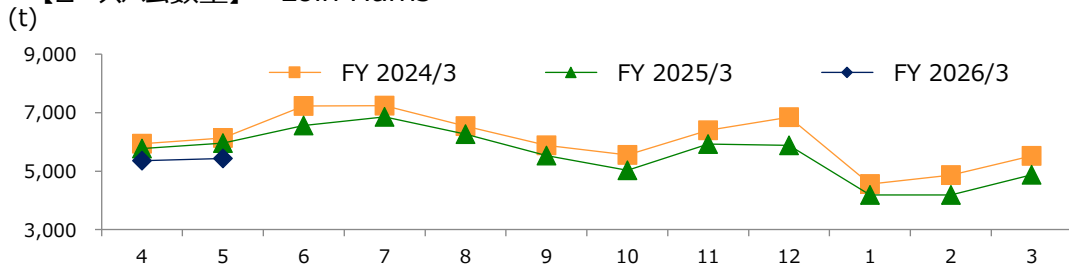
グラフ資料出所：日本食肉加工協会

Source: Japan Meat Processor Association

ハム・ソーセージ全国生産数量

/Production Volume Based on Customs Clearances for Hams and Sausages

【ロースハム数量】 Loin Hams



前期差

Year-on-year

-530

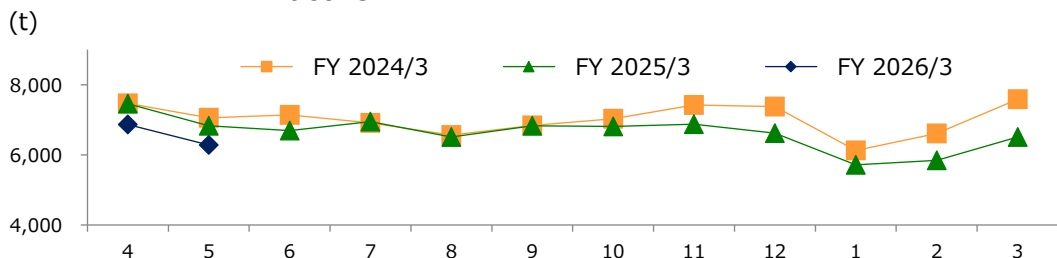
前月差

Month-on-month

77

グラフ資料出所：日本食肉加工協会
Source: Japan Meat Processor Association

【ベーコン数量】 Bacons



前期差

Year-on-year

-549

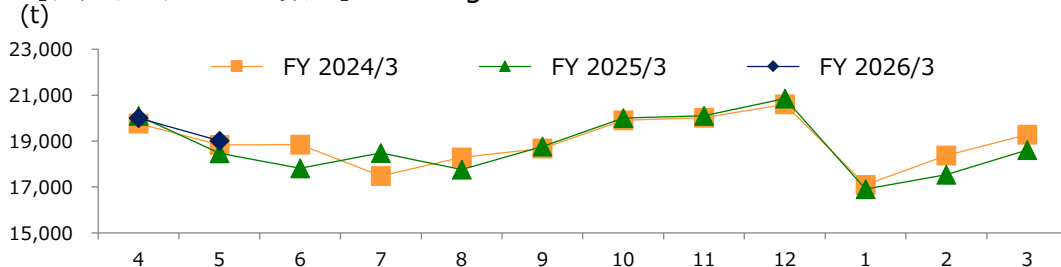
前月差

Month-on-month

-588

グラフ資料出所：日本食肉加工協会
Source: Japan Meat Processor Association

【ウインナーソーセージ数量】 Sausages



前期差

Year-on-year

542

前月差

Month-on-month

-990

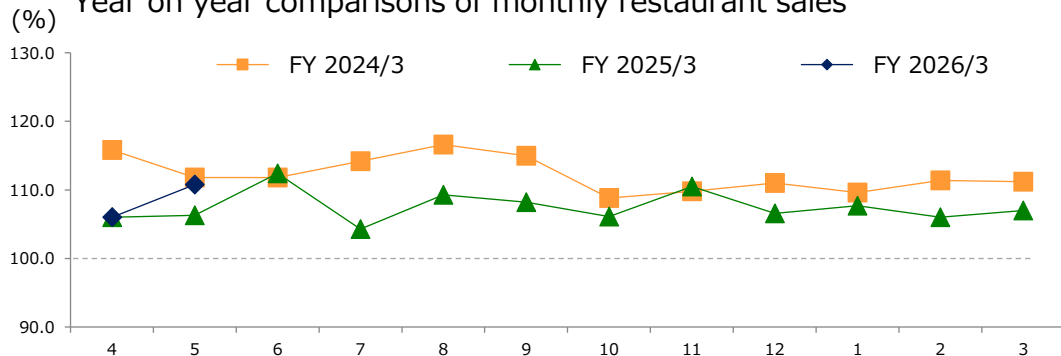
グラフ資料出所：日本食肉加工協会
Source: Japan Meat Processor Association

外食・量販店売上高推移

/ Sales Trends in restaurants and volume retailers

【外食売上高前年同月比】

Year on year comparisons of monthly restaurant sales



(%)

前期差
Year-on-year

前月差
Month-on-month

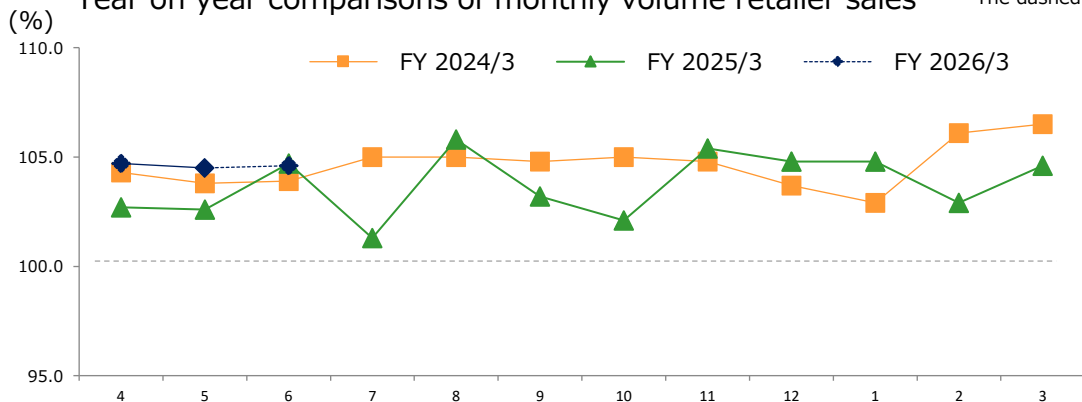
4.5

4.8

グラフ資料出所：一般社団法人日本フードサービス協会
Source: Japan Foodservice Association

【量販店売上高前年同月比】

Year on year comparisons of monthly volume retailer sales



※破線は暫定値
The dashed line is provisional.

(%)

0.1前期差
Year-on-year

前月差
Month-on-month

1.9

-0.2

グラフ資料出所：流通三団体 スーパーマーケット販売統計調査
Source: Three volume retailer associations, sales statistics survey of volume retailers

参照データ 牛肉相場/Beef Prices (P.3-5)

豪州 若齢牛価格 (生産者販売価格、豪セント/KG) /Eastern Young Cattle Indicator (EYCI)

出所：豪州食肉家畜生産者事業団/Source: Meat & Livestock Australia Ltd

	4	5	6	7	8	9	10	11	12	1	2	3	Average
FY2024/3	686.1	616.4	567.0	566.8	535.1	420.3	357.7	437.7	534.5	616.8	646.1	596.4	548.4
FY2025/3	600.9	612.1	594.1	631.7	671.3	666.4	627.4	627.6	670.2	690.4	652.0	653.1	641.4
FY2026/3	702.5	695.9	711.9	*730.9									703.4

豪州チルドビーフ ショートグレインフルセット (円/KG) /Australian Chilled Beef [Full Set (Short Grain Fed)] Prices

出所：食品産業新聞社畜産日報掲載分から単純平均単価(全て単純平均単価)

Source: "DAILY MEAT & LIVESTOCK" which is a trade business paper published in Japan(all graphs based on average price)

	4	5	6	7	8	9	10	11	12	1	2	3	Average
FY2024/3	1,569	1,554	1,508	1,469	1,394	1,410	1,503	1,515	1,533	1,523	1,545	1,588	1,509
FY2025/3	1,618	1,643	1,629	1,683	1,693	1,678	1,668	1,685	1,715	1,709	1,705	1,711	1,678
FY2026/3	1,754	1,793	1,796	*1,790									1,781

米国産 肥育素牛(生産者販売価格) (現地価格)

出所：農畜産業振興機構/Source: Agriculture & Livestock Industries Corporation

	4	5	6	7	8	9	10	11	12	1	2	3	Average
FY 2024/3	233.5	235.5	249.8	268.3	271.2	275.1	253.8	255.8	251.0	260.3	289.3	302.2	262.2
FY 2025/3	290.4	288.8	295.0	292.5	276.9	265.5	267.5	272.9	291.8	318.8	312.5	336.7	292.4
FY 2026/3	348.4	353.0											350.7

米国産 牛肉カットアウトバリュー 枝肉ベース (ドル/100ポンド) /U.S. Beef Boxed cutout, Choice 1-3, 600-900 lbs

出所：農畜産業振興機構/Source: Agriculture & Livestock Industries Corporation

	4	5	6	7	8	9	10	11	12	1	2	3	Average
FY2024/3	300.5	304.3	327.3	309.8	308.2	307.9	303.1	299.3	292.5	289.4	295.7	308.3	303.9
FY2025/3	298.9	304.6	319.9	321.4	314.3	304.7	312.2	311.4	315.2	329.6	318.2	323.3	314.5
FY2026/3	335.7	352.8											344.3

去勢和牛 A-3 (東京市場、税込、円/KG) /Tokyo Market A-3 Wagyu Steer Prices, Tax Included

出所：東京食肉市場株式会社/Data Source: Tokyo Meat Market Co.Ltd

	4	5	6	7	8	9	10	11	12	1	2	3	Average
FY2024/3	2,124	2,028	1,964	1,935	1,832	1,819	1,836	1,970	2,145	2,120	2,087	2,027	1,991
FY2025/3	2,048	1,974	1,846	1,852	1,821	1,915	1,959	2,189	2,324	2,084	2,145	2,137	2,025
FY2026/3	2,166	2,185	2,008	*1,993									2,120

参照データ 豚肉相場/Pork Prices(P.7-8)

米国 肥育豚価格 (生産者販売価格、セント/ポンド) /Live U.S. Fattening Pig Prices (Pig sales price)

出所：農畜産業振興機構(全て単純平均単価)/Source:Agriculture & Livestock Industries Corporation (all graphs based on average price) (US ¢/lb)

	4	5	6	7	8	9	10	11	12	1	2	3	Average
FY2024/3	51.7	55.4	63.1	73.9	71.5	62.4	58.1	56.2	48.7	49.8	55.2	59.8	69.7
FY2025/3	64.8	66.2	65.6	65.0	64.9	61.3	61.5	63.7	60.9	59.3	63.9	64.5	63.5
FY2026/3	-	-											

米国産 豚肉カットアウトバリュー 枝肉ベース (ドル/100ポンド) /U.S. Pork Cutout composite carcass, 53-54% lean

出所：米国食肉輸出連合会/Source：U.S. Meat Export Federation (US\$/cwt)

	4	5	6	7	8	9	10	11	12	1	2	3	Average
FY2024/3	78.0	82.6	92.7	112.2	105.9	98.3	90.4	86.7	83.6	87.0	89.1	93.1	91.6
FY2025/3	99.1	100.3	98.9	100.0	98.9	94.9	97.0	96.7	93.4	91.1	97.7	96.9	97.1
FY2026/3	94.5	99.4											97.0

シーズドポーク(GSP)輸入価格 (CIF, 円/kg) / Seasoned Pork (GSP) Import Prices

出所：財務省貿易統計(金額÷数量で算出) /Source：Trade Statistics of Japan (Calculated by amount/quantity) (yen/kg)

	4	5	6	7	8	9	10	11	12	1	2	3	Average
FY2024/3	509.9	526.3	550.8	563.9	580.3	597.7	599.9	615.3	602.8	573.8	594.8	577.9	574.5
FY2025 /3	571.5	614.7	624.6	626.2	623.3	599.9	611.5	621.8	631.8	616.8	622.9	607.0	614.3
FY2026 /3	590.0	600.1											595.0

豚肉枝肉卸売価格 上物 東京市場平均価格、税込 (円/KG) /Pork Carcass Prices (Tokyo Market Excellent grade, monthly average, Tax Included)

出所：東京食肉市場株式会社/Data Source：Tokyo Meat Market Co.Ltd (yen/kg)

	4	5	6	7	8	9	10	11	12	1	2	3	Average
FY2024/3	562	645	700	681	714	699	558	519	551	491	594	549	605
FY2025/3	613	714	753	831	764	665	619	570	637	597	620	614	666
FY2026/3	597	659	794	*921									683

参照データ 鶏肉相場/Chicken Prices (P.10-11)

国産鶏肉卸売価格（もも肉、税抜、円/KG）/Broiler Price (Tokyo market) Leg Wholesale Prices

出所：農畜産業振興機構、農林水産省「食鳥市況情報」

Source：Agriculture & Livestock Industries Corporation, MAFF "Survey of Broiler Wholesale price"

	4	5	6	7	8	9	10	11	12	1	2	3	Average
FY2024/3	808	793	761	725	694	667	665	690	711	729	710	687	720
FY2025/3	662	648	636	630	629	641	669	707	746	770	772	767	690
FY2026/3	805	855	844	*824									835

国産鶏肉卸売価格（むね肉、税抜、円/KG）/Broiler Price (Tokyo market) Breast Wholesale Prices

出所：農畜産業振興機構、農林水産省「食鳥市況情報」

Source：Agriculture & Livestock Industries Corporation, MAFF "Survey of Broiler Wholesale price"

	4	5	6	7	8	9	10	11	12	1	2	3	Average
FY2024/3	419	418	417	411	401	389	384	390	393	396	391	385	400
FY2025/3	374	368	368	370	372	381	393	406	419	422	415	411	392
FY2026/3	449	501	538	*561									496

ブラジル もも肉価格（円/KG）/Brazilian Chicken Thigh Prices

出所：食品産業新聞社畜産日報掲載分から単純平均単価

Data Source："DAILY MEAT & LIVESTOCK" which is a trade business paper published in Japan(all graphs based on average price)

	4	5	6	7	8	9	10	11	12	1	2	3	Average
FY2024/3	415	415	415	444	477	435	435	435	435	390	360	390	421
FY2025/3	390	390	410	410	400	390	371	390	390	390	400	432	397
FY2026/3	465	470	475	*450									470

米国 むね肉価格（ボンレス）(現地価格)】

出所：農畜産業振興機構/Source：Agriculture & Livestock Industries Corporation

	4	5	6	7	8	9	10	11	12	1	2	3	Average
FY2024/3	131.3	137.0	130.5	116.1	140.7	165.2	145.1	109.6	98.8	116.7	124.9	145.3	130.1
FY2025/3	170.1	182.0	172.1	176.2	189.1	190.5	153.5	148.1	147.8	147.9	172.6	223.5	177.9
FY2026/3	268.0	276.5											177.9

参照データ 副原料相場/Auxiliary Materials (P.13)

とうもろこしの輸入価格 (円/トン) /Imported Corn Prices (P14)

出所：農畜産業振興機構(全て単純平均単価)/Source : Agriculture & Livestock Industries Corporation (all graphs based on average price) (yen/t)

	4	5	6	7	8	9	10	11	12	1	2	3	Average
FY2024/3	46,636	47,332	48,038	48,435	46,775	45,813	41,912	39,035	38,801	38,866	40,158	39,515	43,443
FY2025/3	38,142	38,616	39,058	40,126	38,316	35,888	34,622	36,129	37,201	39,901	39,734	39,468	38,100
FY2026/3	39,432	37,463											38,448

配合飼料の価格動向 (円/トン) /Mixed Feed Prices

出所：農畜産業振興機構(全て単純平均単価)/Source : Agriculture & Livestock Industries Corporation (all graphs based on average price) (yen/t)

	4	5	6	7	8	9	10	11	12	1	2	3	Average
FY2024/3	90,070	90,145	90,148	88,701	88,638	88,875	86,808	86,825	86,660	89,143	89,150	89,180	88,695
FY2025/3	85,830	85,935	86,150	87,872	87,895	88,193	84,865	84,971	84,734	87,428	87,515	87,634	86,447
FY2026/3	87,520												

参照データ 飼料価格相場/Market Trends in Grain Feed Prices (P.14)

天然腸 (CIF、主に羊腸(豚腸・牛腸等も含む)、円/ kg) /Natural Casing (CIF、Mainly seep casing including pork & beef casing)

出所：財務省貿易統計(金額÷数量で算出)/Source : Trade Statistics of Japan (Calculated by amount/quantity) (yen/kg)

	4	5	6	7	8	9	10	11	12	1	2	3	Average
FY2024/3	5,751	6,221	5,981	5,696	5,993	5,416	5,460	5,529	5,590	5,802	5,294	4,866	5,633
FY2025/3	5,055	5,245	5,144	4,698	5,158	4,925	4,763	4,671	4,977	4,806	4,375	4,840	4,888
FY2026/3	4,858	4,570											4,714

ナチュラルチーズ (CIF、円/ kg) /Natural cheese(CIF)

出所：農畜産業振興機構(全て単純平均単価)/Source : Agriculture & Livestock Industries Corporation (all graphs based on average price) (yen/kg)

	4	5	6	7	8	9	10	11	12	1	2	3	Average
FY2024/3	772	791	777	794	767	773	775	755	759	732	737	755	766
FY2025/3	734	748	758	769	724	748	733	761	754	787	775	741	753
FY2026/3	764	772											768

参照データ ハム・ソーセージ全国生産数量、輸入通関実績数量 (P.16-17)

/Production and Import Volume Based on Customs Clearances for Hams and Sausages



たんぱく質を、もっと自由に。

Nipponham Group Vision 2030

ハム・ソーセージ全国生産数量、輸入通関実績数量/Production and Import Volume Based on Customs Clearances for Hams and Sausages

(t)

FY 2024/3	4	5	6	7	8	9	10	11	12	1	2	3	Total
国内生産量/Production	45,615	43,689	45,669	44,442	43,512	42,591	43,954	46,215	46,897	36,829	39,364	43,011	521,788
ロースハム /Loin Hams	5,938	6,131	7,228	7,239	6,539	5,878	5,549	6,391	6,849	4,554	4,860	5,522	72,678
ベーコン/ Bacons	7,465	7,059	7,140	6,911	6,562	6,836	7,032	7,421	7,379	6,126	6,608	7,587	84,126
ウイナソーセージ/Sausages	19,764	18,837	18,840	17,474	18,295	18,673	19,911	20,012	20,606	17,088	18,369	19,277	227,146
輸入量/ Imports	3,021	2,209	2,788	2,908	3,000	2,575	2,606	2,632	2,679	1,856	2,053	2,260	30,587
合計/Supplied Quantity	48,636	45,898	48,457	47,350	46,512	45,166	46,560	48,847	49,576	38,685	41,417	45,271	552,375

(t)

FY 2025/3	4	5	6	7	8	9	10	11	12	1	2	3	Total
国内生産量/Production	44,987	42,187	41,979	44,172	41,596	41,357	42,411	44,339	44,336	35,550	36,194	39,829	498,937
ロースハム /Loin Hams	5,774	5,958	6,555	6,856	6,266	5,529	5,023	5,930	5,882	4,180	4,186	4,871	67,010
ベーコン/ Bacons	7,460	6,831	6,692	6,947	6,510	6,829	6,808	6,876	6,618	5,714	5,848	6,508	79,641
ウイナソーセージ/Sausages	20,106	18,466	17,818	18,484	17,755	18,769	20,006	20,108	20,862	16,903	17,532	18,604	225,413
輸入量/ Imports	2,999	2,525	2,614	3,073	2,899	2,532	2,862	2,806	2,817	2,282	2,351	3,151	32,911
合計/Supplied Quantity	47,986	44,712	44,593	47,245	44,495	43,889	45,273	47,145	47,152	37,832	38,545	42,980	531,847

(t)

FY 2026/3	4	5	6	7	8	9	10	11	12	1	2	3	Total
国内生産量/Production	43,544	41,187											84,730
ロースハム /Loin Hams	5,351	5,428											10,780
ベーコン/ Bacons	6,870	6,282											13,151
ウイナソーセージ/Sausages	19,998	19,008											39,006
輸入量/ Imports	3,144	2,719											5,863
合計/Supplied Quantity	46,688	43,906											90,593

参照データ「家計調査」/Family Income and Expenditure Survey by Types of Meat (p.15)

出所：総務省「家計調査」二人以上の世帯（農林漁家世帯を除く）

Source：Ministry of Internal Affairs and Communications "Family Income and Expenditure Survey"

Two-ormore-person Households(Not including agricultural,forestry and fisheries households)

(g)

2023	1	2	3	4	5	6	7	8	9	10	11	12
ハム・ソーセージ・ベーコン購入数量/Hams and Sausages, and Bacons	701	684	757	797	795	732	771	767	693	733	743	963
牛肉購入数量/Beef	491	442	466	485	518	479	475	516	465	431	445	654
豚肉購入数量/Pork	1,872	1,795	1,857	1,879	1,852	1,774	1,765	1,737	1,781	1,850	1,848	2,021
鶏肉購入数量/Chicken	1,491	1,402	1,497	1,572	1,485	1,455	1,361	1,363	1,424	1,502	1,508	1,885
2024	1	2	3	4	5	6	7	8	9	10	11	12
ハム・ソーセージ・ベーコン購入数量/Hams and Sausages, and Bacons	669	671	727	734	771	748	735	760	711	686	772	870
牛肉購入数量/Beef	452	413	467	450	477	429	411	484	481	422	457	620
豚肉購入数量/Pork	1,823	1,883	1,921	1,791	1,835	1,804	1,702	1,707	1,740	1,774	1,856	1,993
鶏肉購入数量/Chicken	1,501	1,584	1,614	1,509	1,569	1,568	1,385	1,399	1,526	1,584	1,586	1,801
2025	1	2	3	4	5	6	7	8	9	10	11	12
ハム・ソーセージ・ベーコン購入数量/Hams and Sausages, and Bacons	635	636	715	730	734							
牛肉購入数量/Beef	435	387	425	439	445							
豚肉購入数量/Pork	1,789	1,722	1,910	1,843	1,877							
鶏肉購入数量/Chicken	1,563	1,499	1,650	1,549	1,564							

〇「家計調査」支出金額/Family Income and Expenditure Survey:Expenditure

出所：総務省「家計調査」二人以上の世帯（農林漁家世帯を除く）

Source：Ministry of Internal Affairs and Communications "Family Income and Expenditure Survey"

Two-ormore-person Households(Not including agricultural,forestry and fisheries households)

(yen)

2023	1	2	3	4	5	6	7	8	9	10	11	12
ハム・ソーセージ・ベーコン支出金額/Hams and Sausages, and Bacons	1,143	1,114	1,204	1,241	1,286	1,245	1,311	1,305	1,175	1,242	1,288	1,666
牛肉 支出金額/Beef	1,783	1,554	1,596	1,758	1,833	1,587	1,643	1,800	1,536	1,621	1,715	3,025
豚肉 支出金額/Pork	2,925	2,712	2,762	2,817	2,740	2,681	2,698	2,681	2,755	2,862	2,860	3,060
鶏肉 支出金額/Chicken	1,559	1,475	1,511	1,566	1,530	1,492	1,422	1,411	1,487	1,587	1,569	1,950
2024	1	2	3	4	5	6	7	8	9	10	11	12
ハム・ソーセージ・ベーコン支出金額/Hams and Sausages, and Bacons	1,125	1,126	1,236	1,235	1,281	1,284	1,260	1,293	1,181	1,218	1,333	1,644
牛肉 支出金額/Beef	1,752	1,522	1,704	1,602	1,795	1,610	1,554	1,855	1,644	1,631	1,560	3,090
豚肉 支出金額/Pork	2,866	2,808	2,893	2,695	2,742	2,727	2,724	2,749	2,688	2,850	2,927	3,148
鶏肉 支出金額/Chicken	1,608	1,605	1,650	1,539	1,585	1,524	1,411	1,427	1,467	1,595	1,629	1,993
2025	1	2	3	4	5	6	7	8	9	10	11	12
ハム・ソーセージ・ベーコン支出金額/Hams and Sausages, and Bacons	1,123	1,118	1,251	1,245	1,290							
牛肉支出金額/Beef	1,633	1,398	1,568	1,618	1,755							
豚肉支出金額/Pork	2,901	2,777	2,991	2,891	2,947							
鶏肉支出金額/Chicken	1,650	1,601	1,719	1,630	1,664							

参照データ 牛肉需給動向/Beef (P.6)

出所：農畜産業振興機構

Notes: 1. Boneless cuts equivalent

Source : Agriculture & Livestock Industries Corporation

2. Figures for stocks are estimated by ALIC (t)

FY 2024/3	4	5	6	7	8	9	10	11	12	1	2	3	Total
供給量/Supplied Quantity	98,128	73,754	72,081	69,364	72,450	65,124	70,757	68,439	67,649	70,578	57,914	67,058	853,296
うち生産量/Production	30,207	27,295	28,418	30,671	26,782	28,101	30,423	35,030	31,557	27,314	26,904	28,696	351,398
うち輸入量/Imports	67,921	46,459	43,663	38,693	45,668	37,023	40,334	33,409	36,092	43,264	31,010	38,362	501,898
推定出回り量/Estimated Marketing Quantity	86,959	72,777	71,721	69,951	70,521	68,377	75,370	79,693	75,694	65,945	61,967	71,058	870,033
うち国産品/Domestic	29,694	26,851	27,806	29,809	26,275	26,740	29,463	34,409	30,833	27,712	26,385	26,259	342,236
うち輸入品/ Imported	57,265	45,926	43,915	40,142	44,246	41,637	45,907	45,284	44,861	38,233	35,582	44,799	527,797
推定期末在庫/Estimated Ending Stock	160,155	160,569	160,308	159,090	160,381	156,326	150,877	138,781	129,826	133,856	129,108	124,337	-
うち国産品/Domestic	12,371	12,252	12,243	12,474	12,343	12,902	13,026	12,805	12,619	11,618	11,442	13,108	-
うち輸入品/Imported	147,784	148,317	148,065	146,616	148,038	143,424	137,851	125,976	117,207	122,238	117,666	111,229	-

FY 2025/3	4	5	6	7	8	9	10	11	12	1	2	3	Total
供給量/Supplied Quantity	94,326	76,782	74,992	81,431	74,782	66,444	75,143	70,558	71,434	59,846	55,698	59,260	860,696
うち生産量/Production	31,124	28,270	27,418	32,089	25,885	28,276	31,210	34,984	32,225	27,305	26,345	28,305	353,436
うち輸入量/Imports	63,202	48,512	47,574	49,342	48,897	38,168	43,933	35,574	39,209	32,541	29,353	30,955	507,260
推定出回り量/Estimated Marketing Quantity	81,839	71,007	68,258	75,914	67,761	67,929	73,874	77,278	76,830	63,473	58,095	59,162	841,420
うち国産品/Domestic	31,618	27,283	27,030	31,955	25,425	27,023	30,469	34,417	30,631	27,231	25,602	26,937	345,621
うち輸入品/ Imported	50,221	43,724	41,228	43,959	42,336	40,906	43,405	42,861	46,199	36,242	32,493	32,225	495,799
推定期末在庫/Estimated Ending Stock	136,045	141,267	147,229	151,998	158,254	155,848	156,308	147,658	140,495	136,231	133,085	132,208	-
うち国産品/Domestic	11,835	12,269	11,885	11,271	10,966	11,298	11,230	10,867	10,694	10,131	10,125	10,518	-
うち輸入品/Imported	124,210	128,998	135,344	140,727	147,288	144,550	145,078	136,791	129,801	126,100	122,960	121,690	-

FY 2026/3	4	5	6	7	8	9	10	11	12	1	2	3	Total
供給量/Supplied Quantity	83,667	75,723											159,390
うち生産量/Production	30,580	27,320											57,900
うち輸入量/Imports	53,087	48,403											101,490
推定出回り量/Estimated Marketing Quantity	75,447	66,966											142,413
うち国産品/Domestic	30,210	26,505											56,715
うち輸入品/ Imported	45,237	40,461											85,698
推定期末在庫/Estimated Ending Stock	139,468	147,373											-
うち国産品/Domestic	9,928	9,891											-
うち輸入品/Imported	129,540	137,482											-

参照データ 豚肉需給動向/Pork (P.9)



出所：農畜産業振興機構

Notes: 1. Boneless cuts equivalent

Source : Agriculture & Livestock Industries Corporation

2. Figures for stocks are estimated by ALIC (t)

FY 2024/3	4	5	6	7	8	9	10	11	12	1	2	3	Total
供給量/Supplied Quantity	183,361	165,845	154,797	143,095	144,037	131,227	148,567	157,463	148,815	152,310	142,085	151,684	1,823,286
うち生産量/Production	73,791	76,116	73,486	68,264	70,175	69,500	78,467	82,650	81,152	80,283	77,558	77,333	908,775
うち輸入量/Imports	109,570	89,729	81,311	74,831	73,862	61,727	70,100	74,813	67,663	72,027	64,527	74,351	914,511
推定出回り量/Estimated Marketing Quantity	168,406	146,244	153,933	146,898	146,021	144,899	160,830	165,456	161,570	149,722	148,866	149,436	1,842,281
うち国産品/Domestic	73,309	76,372	73,928	66,926	69,796	68,945	80,065	82,084	79,774	80,748	76,853	75,518	904,318
うち輸入品/ Imported	95,097	69,872	80,005	79,972	76,225	75,954	80,765	83,372	81,796	68,975	72,013	73,918	937,964
推定期末在庫/Estimated Ending Stock	224,618	244,095	244,794	240,825	238,736	224,929	212,501	204,407	191,501	194,008	187,125	189,236	-
うち国産品/Domestic	20,573	20,193	19,586	20,758	21,032	21,452	19,689	20,154	21,381	20,836	21,439	23,117	-
うち輸入品/Imported	204,045	223,902	225,208	220,067	217,704	203,477	192,812	184,253	170,120	173,172	165,686	166,119	-

FY 2025/3	4	5	6	7	8	9	10	11	12	1	2	3	Total
供給量/Supplied Quantity	177,756	170,270	147,970	157,834	149,729	147,439	166,367	156,577	157,179	160,413	144,518	142,008	1,878,060
うち生産量/Production	78,976	76,183	66,310	71,679	65,651	68,773	79,625	78,361	80,661	79,908	72,607	76,052	894,786
うち輸入量/Imports	98,780	94,087	81,660	86,155	84,078	78,666	86,742	78,216	76,518	80,505	71,911	65,956	983,274
推定出回り量/Estimated Marketing Quantity	170,157	152,741	144,121	156,883	145,992	146,978	165,716	163,590	165,004	159,479	141,484	142,266	1,854,411
うち国産品/Domestic	79,317	74,520	65,692	73,101	66,675	69,219	79,699	78,249	79,425	78,746	71,884	75,606	892,133
うち輸入品/ Imported	90,840	78,221	78,429	83,782	79,317	77,759	86,017	85,341	85,579	75,733	69,600	66,660	957,278
推定期末在庫/Estimated Ending Stock	196,729	214,164	217,906	218,756	222,398	222,777	223,306	216,186	208,194	214,044	216,940	216,539	-
うち国産品/Domestic	22,670	24,239	24,750	23,227	22,108	21,580	21,384	21,389	22,458	23,536	24,121	24,424	-
うち輸入品/Imported	174,059	189,925	193,156	195,529	200,290	201,197	201,922	194,797	185,736	190,508	192,819	192,115	-

FY 2026/3	4	5	6	7	8	9	10	11	12	1	2	3	Total
供給量/Supplied Quantity	171,361	163,560											334,921
うち生産量/Production	77,457	73,100											150,557
うち輸入量/Imports	93,904	90,460											184,364
推定出回り量/Estimated Marketing Quantity	166,029	146,973											313,002
うち国産品/Domestic	77,266	73,406											150,672
うち輸入品/ Imported	88,763	73,567											162,330
推定期末在庫/Estimated Ending Stock	221,774	238,240											-
うち国産品/Domestic	24,518	24,091											-
うち輸入品/Imported	197,256	214,149											-

参照データ 鶏肉需給動向/Chicken (P.12)

出所：農畜産業振興機構

注：数量は骨付き肉ベース。成鶏肉を含む。輸入量には鶏肉以外の家禽肉を含まない。

Source：Agriculture & Livestock Industries Corporation

Notes: 1. Bone in cuts equivalent

2. Figures for stocks are estimated by ALIC

3. The production quantity and the estimated marketing quantity on the domestic one are made public only until February, 2010 ⁽¹⁾

FY 2024/3	4	5	6	7	8	9	10	11	12	1	2	3	Total
供給量/Supplied Quantity	186,718	194,566	199,441	180,349	189,658	184,169	193,357	185,982	206,379	194,780	199,947	196,472	2,311,818
うち生産量/Production	139,306	142,849	141,735	133,663	133,703	135,797	145,552	146,801	155,398	140,093	144,552	143,802	1,703,251
うち輸入量/Imports	47,412	51,717	57,706	46,686	55,955	48,372	47,805	39,181	50,981	54,687	55,395	52,670	608,567
推定出回り量/Estimated Marketing Quantity	193,570	184,771	194,075	182,343	184,543	186,955	195,223	195,829	208,001	186,962	197,971	189,499	2,299,742
うち国産品/Domestic	138,808	141,053	142,480	131,657	132,309	137,746	145,847	145,682	152,720	142,492	140,836	141,802	1,693,432
うち輸入品/Imported	54,762	43,718	51,595	50,686	52,234	49,209	49,376	50,147	55,281	44,470	57,135	47,697	606,310
推定期末在庫/Estimated Ending Stock	147,050	156,845	162,211	160,217	165,332	162,546	160,680	150,833	149,211	157,029	159,005	165,978	-
うち国産品/Domestic	27,547	29,343	28,598	30,604	31,998	30,049	29,754	30,873	33,551	31,152	34,868	36,868	-
うち輸入品/Imported	119,503	127,502	133,613	129,613	133,334	132,497	130,926	119,960	115,660	125,877	124,137	129,110	-

FY 2025/3	4	5	6	7	8	9	10	11	12	1	2	3	Total
供給量/Supplied Quantity	198,417	200,427	192,542	191,508	186,726	185,041	210,004	196,202	204,325	191,400	184,386	188,809	2,329,787
うち生産量/Production	146,411	147,168	143,169	139,730	130,029	135,916	147,681	144,235	154,393	139,100	136,695	146,506	1,711,033
うち輸入量/Imports	52,006	53,259	49,373	51,778	56,697	49,125	62,323	51,967	49,932	52,300	47,691	42,303	618,754
推定出回り量/Estimated Marketing Quantity	201,832	195,686	190,072	192,220	182,753	188,404	206,362	199,413	209,923	190,493	184,864	196,730	2,338,752
うち国産品/Domestic	147,773	146,411	142,724	140,970	130,403	137,856	148,633	145,657	155,608	142,407	137,233	146,455	1,722,130
うち輸入品/Imported	54,059	49,275	47,348	51,250	52,350	50,548	57,729	53,756	54,315	48,086	47,631	50,275	616,622
推定期末在庫/Estimated Ending Stock	162,563	167,304	169,774	169,062	173,035	169,672	173,314	170,103	164,505	165,412	164,934	157,013	-
うち国産品/Domestic	35,506	36,263	36,708	35,468	35,094	33,154	32,202	30,780	29,565	26,258	25,720	25,771	-
うち輸入品/Imported	127,057	131,041	133,066	133,594	137,941	136,518	141,112	139,323	134,940	139,154	139,214	131,242	-

FY 2026/3	4	5	6	7	8	9	10	11	12	1	2	3	Total
供給量/Supplied Quantity	196,262	194,868											391,130
うち生産量/Production	148,548	146,331											294,879
うち輸入量/Imports	47,714	48,537											96,251
推定出回り量/Estimated Marketing Quantity	200,870	192,117											392,987
うち国産品/Domestic	149,346	144,322											293,668
うち輸入品/Imported	51,524	47,795											99,319
推定期末在庫/Estimated Ending Stock	152,405	155,156											-
うち国産品/Domestic	24,973	26,982											-
うち輸入品/Imported	127,432	128,174											-

参照データ 外食・量販店売上高推移

/ Sales Trends in restaurants and volume retailers (P.18)

外食売上高前年同月比 / Year on year comparisons of monthly restaurant sales

出所：一般社団法人日本フードサービス協会 / Source : Japan Foodservice Association

(%)

	4	5	6	7	8	9	10	11	12	1	2	3	Average
FY 2024/3	115.8	111.8	111.8	114.2	116.6	115.0	108.8	109.8	111.0	109.6	111.4	111.2	112.3
FY 2025/3	106.0	106.3	112.4	104.3	109.3	108.2	106.1	110.5	106.6	107.7	106.0	107.0	107.5
FY 2026/3	106.0	110.8											108.4

量販店売上高前年同月比 / Year on year comparisons of monthly volume retailer sales

出所：流通三団体 スーパーマーケット販売統計調査 / Source : Three Volume retail associations, sales statistics survey of volume retailers

(%)

	4	5	6	7	8	9	10	11	12	1	2	3	Average
FY 2024/3	104.3	103.8	103.9	105.0	105.0	104.8	105.0	104.8	103.7	102.9	106.1	106.5	104.7
FY 2025/3	102.7	102.6	104.7	101.3	105.8	103.2	102.1	105.4	104.8	104.8	102.9	104.6	103.7
FY 2026/3	104.7	104.5	*104.6										104.6

〒141-6014 東京都品川区大崎2-1-1
ThinkPark Tower
日本八ム株式会社 VBM推進室
電話：03-4555-8052
mail: nhfoods.ir@nipponham.co.jp

VBM Promotion Office
NH Foods Ltd.
ThinkPark Tower
2-1-1 Osaki, Shinagawa-ku, Tokyo 141-6014
Tel: +81-3-4555-8052
mail: nhfoods.ir@nipponham.co.jp